

NORPIN

Deep Drawn

Enclosures

Service.

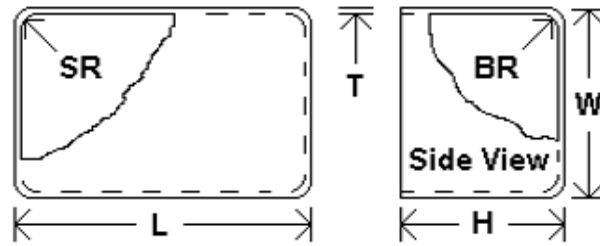
Selection.

Quality.

Our Commitment Runs Deep.

NORPIN

RECTANGULAR ENCLOSURES



OUTSIDE WIDTH INCHES - W	LENGTH INCHES - L	MAXIMUM HEIGHT INCHES - H	BOTTOM RADII INCHES - BR	SIDE RADII INCHES - SR	MATERIAL THICKNESS INCHES - T	COVERS	NORPIN PART #
-----------------------------	----------------------	------------------------------	-----------------------------	---------------------------	----------------------------------	--------	---------------

Less Than 1 Inch to 1 Inch - Rectangular Boxes

Width	Length	Height	BR	SR	Thickness	COVERS	NORPIN PART #
0.641	3.234	0.750	0.060	0.060	.010		NR020.5-103.5A-XXX/CU
0.782	0.822	0.750	0.032	0.032	.020		NRS025-028 SP
0.812	2.281	0.750	0.093	0.093	.032		NR026-209A-XXX/AL
0.812	2.281	0.750	0.156	0.093	.032		NR026-209B-XXX/AL
0.885	2.160	1.188	0.620	0.156	.020		NR029-205.5A-XXX/AL
0.893	1.284	0.875	0.062	0.109	.020		NR28.6-109.1A-XXX/AL
0.906	1.656	1.000	0.156	0.250	.050		NR029-121A-XXX/AL
0.906	2.170	2.625	0.063	0.156	.020		NR029-205.5A-XXX/AL
0.968	2.250	0.625	0.063	0.156	.020		NRO31.5-208A-XXX/AL
0.968	3.921	0.547	0.040	0.125	.040		NR031-329.5A-XXX/AL
0.984	2.320	3.000	0.125	0.188	.050		NR031.5-210.5A-XXX/AL
0.984	2.500	2.060	0.125	0.125	.020		NR031.5-216A-XXX/AL

1.000 Inch to 1.250 Inch - Rectangular Boxes

Width	Length	Height	BR	SR	Thickness	COVERS	NORPIN PART #
1.000	2.000	1.000	0.125	0.125	.032		NR100-200A-XXX/AL
1.000	2.000	1.000	0.250	0.125	.032		NR100-200B-XXX/AL
1.000	2.750	1.000	0.125	0.219	.040		NR100-224A-XXX/AL
1.053	1.245	1.000	0.156	0.125	.063		NR102-108A-XXX/AL
1.062	2.062	2.281	0.125	0.125	.032		NR102-202A-XXX/AL
1.080	1.906	1.000	0.125		.032		NR102.6-129A-XXX/
1.125	2.750	1.000	0.188	0.188	.050		NR104-224A-XXX/AL
1.125	3.750	4.125	0.188	0.218	.040		NR104-324A-XXX/AL
1.125	3.750	4.500	0.188	0.188	.040		NR104-324A-XXX/AL
1.148	1.178	0.750	0.093	0.078	.020		NR104.5-105.5A-XXX/BR
1.148	2.000	1.000	0.063	0.090	.040		NR104.5-200A-XXX/AL
1.187	1.750	1.188	0.094	0.094	.040		NR106-124A-XXX/AL
1.187	3.187	1.125	0.094	0.125	.032		NR106-306A-XXX/AL
1.218	2.250	0.875	0.093	0.093	.020		NR107-208A-XXX/AL
1.234	4.687	1.125	0.125	0.125	.032		NR107.5-422A-XXX/AL
1.250	1.500	2.750	0.125	0.125	.050		NR108-116A-XXX/AL
1.250	1.750	1.000	0.094	0.094	.020		NR108-124A-XXX/AL
1.250	2.000	1.375	0.188	0.188	.040		NR108-200A-XXX/AL

1.250 Inch to 1.500 Inch - Rectangular Boxes

Width	Length	Height	BR	SR	Thickness	COVERS	NORPIN PART #
1.250	2.625	1.125	0.125	0.125	.040		NR108-220A-XXX/AL
1.260	3.265	0.312	0.030	0.171	.032		NR108.5-308.5C-XXX/AL
1.312	2.000	1.000	0.093	0.125	.032		NR110-200-XXX/AL
1.312	3.062	1.250	0.093	0.093	.032		NR110-302A-XXX/AL
1.312	3.250	0.875	0.062	0.125	.020	OLT	NR110-308A-XXX/AL
1.312	4.966	1.312	0.190	0.190	.040		NR110-430.2A-XXX/AL
1.365	3.146	4.250	0.125	0.188	.032		NR111.7-304.7A-XXX/AL
1.375	5.000	1.500	0.188	0.188	.040		NR112-500A-XXX/AL
1.375	5.125	1.750	0.188	0.188	.040	OLT	NR112-504A-XXX/AL
1.375	5.125	1.750	0.250	0.188	.040		NR112-504B-XXX/AL
1.400	3.400	0.800			.032		NR112.8-312.8-XXX/AL
1.400	3.400	1.125	0.093	0.170	.032		NR112.8-312.9A-XXX/AL
1.415	3.450	0.500	0.032	0.063	.032		NRS113-314A
1.437	2.000						NR114-200A-XXX/AL
1.437	2.437	1.250	0.094	0.094	.040		NR114-214A-XXX/AL
1.437	5.125	1.250	0.156	0.093	.040		NR114-504A-XXX/AL
1.468	7.000	1.000	0.094	0.125	.032		NR115-700A-XX/AL

1.500 Inch to 1.750 Inch - Rectangular Boxes

Width	Length	Height	BR	SR	Thickness	COVERS	NORPIN PART #
1.500	1.860	1.375	0.125	0.125	.040		NR116-127.5A-XXX/AL
1.500	2.000	1.500	0.125	0.188	.040		NR116-200A-XXX/AL
1.500	2.000	1.500	0.250	0.188	.040		NR116-200B-XXX/AL
1.500	3.200	1.500	0.210	0.210	.040		NR116-306.4A-XXX/AL
1.500	3.500	1.500	0.125	0.125	.040		NR116-316A-XXX/AL
1.500	3.750	1.500	0.125	0.188	.040		NR116-324A-XXX/AL
1.545	5.343	1.437	0.125	0.125	.050		NR117.5-511A-XXX/AL
1.610	3.610	1.250	0.093	0.093	.040		NR119.5-319.5A-XXX/AL
1.610	3.610	1.610	0.078	0.078	.063		NR119.5-319.5C-XXX/AL
1.625	2.000	1.500	0.125	0.125	.025	ILT	NR120-200A-XXX/BR
1.625	2.625	1.625	0.078	0.078	.063		NR120-220A-XXX/AL
1.625	2.750	1.625	0.188	0.188	.063		NR120-224A-XX/AL
1.625	2.750	1.625	0.080	0.188	.063		NR120-224C-XXX/AL
1.625	4.265	1.000	0.188	0.188	.040		NR120-408.5B-XXX/AL
1.625	5.750	1.625	0.188	0.188	.050		NR120-524A-XXX/AL
1.625	8.609	0.750	0.090	0.812	.050		NR120-819.5S-XXX/AL
1.750	1.875	1.687	0.312	0.312	.032	ILT	NR124-128A-XXX/BR
1.750	2.000	1.000	0.188	0.188	.040	OLT	NR124-200A-XXX/AL
1.750	2.000	1.750	0.125	0.188	.040		NR124-200B-XXX/AL
1.750	2.500	1.750	0.250	0.250	.040	ILT	NR124-216A-XXX/AL
1.750	2.500	1.750	0.188	0.250	.040		NR124-216B-XXX/AL
1.750	2.500	1.625	0.156	0.250	.040		NR124-216C-XXX/AL
1.750	2.500	1.750	0.312	0.250	.040		NR124-216D-XXX/AL
1.750	2.750	2.250	0.312	0.250	.050		NR124-224A-XXX/AL
1.750	2.750	2.250	0.250	0.250	.050		NR124-224B-XXX/AL

1.500 Inch to 2.000 Inch - Rectangular Boxes - CONTINUED

Width	Length	Height	BR	SR	Thickness	COVERS	NORPIN PART #
1.750	3.000	1.625	0.125	0.125	.040		NR124-300A-XXX/AL
1.750	3.000	1.625	0.188	0.125	.040		NR124-300B-XXX/AL
1.750	3.000	1.500	0.117	0.125	.050	OLT	NR124-300C-XXX/AL
1.750	3.000	1.750	0.125	0.134	.032		NR124-300D-XXX/AL
1.750	5.000	4.000	0.188	0.188	.040		NR124-500A-XXX/AL
1.750	5.000	1.750	0.188	0.188	.040		NR124-500A-XXX/AL
1.781	2.187	1.625	0.188	0.188	.090		NR125-206C-XXX/AL
1.793	2.168	1.625	0.188	0.188	.090		NR125.5-205.5A-XXX/AL
1.812	3.156	0.656	0.062	0.125	.020		NR126-305A-XXX/AL
1.843	3.218	4.000	0.125	0.125	.040		NR127-307A-XXX/AL
1.875	4.281	3.250	0.250	0.250	.032		NR128-409A-XXX/AL
1.875	4.312	5.000	0.188	0.250	.050		NR128-410A-XXX/AL
1.875	4.312	1.750	0.188	0.250	.050		NR128-410A-XXX/AL
1.890	2.500	1.750	0.093	0.093	.032		NR128.5-216A-XXX/AL
1.906	3.406	1.875	0.125	0.218	.050		NR129-313A-XXX/AL
1.937	2.187	0.500	0.093	0.218	.044		NR130-206C-XXX/CRS
1.937	2.968	1.250	0.062	0.109	.032		NR130-231A-XXX/AL
1.937	3.937	2.031	0.125	0.188	.040	OLG	NR130-330A-XXX/AL
1.937	6.531	1.875	0.125	0.188	.040		NR130-617A-XXX/AL
1.968	3.547	1.875	0.062	0.250	.020		NR131-317.5A-XXX/AL

2.000 Inch to 2.000 Inch - Rectangular Boxes

Width	Length	Height	BR	SR	Thickness	COVERS	NORPIN PART #
2.000	2.250	1.812	0.125	0.125	.040		NR200-208A-XXX/AL
2.000	2.281	1.875	0.125	0.218	.032		NR200-209A-XXX/AL
2.000	2.312	4.875	0.062	0.375	.032		NR200-210A-XXX/AL
2.000	2.437	2.000	0.172	0.172	.032		NR200-214A-XXX/AL
2.000	2.500	2.250	0.188	0.188	.050	ILT	NR200-216A-XXX/AL
2.000	2.500	2.250	0.312	0.188	.050		NR200-216B-XXX/AL
2.000	2.937	2.000	0.125	0.172	.040		NR200-230A-XXX/AL
2.000	3.000	2.312	0.188	0.188	.050	OLT	NR200-300A-XXX/AL
2.000	3.000	2.312	0.312	0.188	.050		NR200-300B-XXX/AL
2.000	3.000	3.250	0.250	0.250	.050		NR200-300C-XXX/AL
2.000	3.000	3.250	0.250	0.234	.063		NR200-300D-XXX/AL
2.000	3.000	1.375	0.125	0.213	.020		NR200-300E-XXX/AL
2.000	3.000	1.375	0.125	0.250	.050		NR200-300F-XXX/AL
2.000	3.500	2.500	0.250	0.250	.050	OLT/ILT	NR200-316A-XXX/AL
2.000	3.500	2.500	0.375	0.250	.050	OLT/ILT	NR200-316B-XXX/AL
2.000	3.500	1.750	0.250	0.250	.050		NR200-316C-XXX/AL
2.000	4.000	2.500	0.250	0.250	.050	OLT/ILT	NR200-400A-XXX/AL
2.000	4.000	2.500	0.375	0.250	.050		NR200-400B-XXX/AL
2.000	4.000	2.000	0.125	0.156	.063	OLT	NR200-400C-XXX/AL
2.000	4.000	3.750	0.125	0.125	.063		NR200-400E-XXX/AL
2.000	4.781	0.375	0.031	0.094	.032		NR200-425C-XXX/AL
2.000	5.500	2.250	0.312	0.312	.050	ILT	NR200-516A-XXX/AL

2 Inch to 2.250 Inch - Rectangular Boxes - CONTINUED

Width	Length	Height	BR	SR	Thickness	COVERS	NORPIN PART #
2.000	5.500	2.250	0.437	0.312	.050		NR200-516B-XXX/AL
2.016	3.297	2.000	0.188	0.188	.032		NR200.5-309.5-XXX/AL
2.078	3.875	0.500	0.040	0.063	.040		NR202.5-328S-XXX/AL
2.078	4.953	2.000	0.188	0.190	.040		NR202.5-430.5A-XXX/AL
2.125	3.656	2.000	0.190	0.440	.050		NR204-321A-XXX/AL
2.125	4.125	2.000	0.188	0.188	.040		NR204-404A-XXX/AL
2.125	4.250	2.250	0.250	0.125	.063		NR204-408B-XXX/AL
2.125	5.000	2.000	0.125	0.220	.032		NR204-500A-XXX/AL
2.125	8.750	3.562	0.312	0.312	.050		NR204-824A-XXX/AL
2.125	8.750	3.562	0.437	0.312	.050		NR204-824B-XXX/AL
2.135	2.880	2.000	0.320	0.320	.032		NR204.5-228.5A-XXX/AL
2.141	6.734	0.375	0.031	0.290	.032		NR204.5-623.5A-XXX/AL
2.156	2.516	3.203	0.375	0.271	.032		NR205-216.5A-XXX/AL
2.177	2.906	0.375	0.040	0.093	.050		NR205.5-229C-XXX/AL
2.187	2.875	2.250	0.125	0.125	.063		NR206-228B-XXX/AL
2.187	2.906	0.500	0.040	0.093	.050		NR206-229C-XXX/AL
2.187	4.625	2.250	0.125	0.188	.040		NR206-420A-XXX/AL
2.237	3.696	3.093	0.090	0.156	.040		NR207.6-322.3A-XXX/AL
2.240	2.350	2.000	0.625	0.240	.032		NR207.5-211.5A-XXX/AL

2.250 Inch to 2.500 Inch - Rectangular Boxes

Width	Length	Height	BR	SR	Thickness	COVERS	NORPIN PART #
2.250	3.000	2.500	0.250	0.250	.040		NR208-300A-XXX/AL
2.250	3.000	2.500	0.375	0.250	.040		NR208-300B-XXX/AL
2.250	3.000	5.375	0.188	0.188	.040		NR208-300C-XXX/AL
2.250	3.250	2.000	0.125	0.125	.040		NR208-308A-XXX/AL
2.250	3.250	2.000	0.188	0.125	.040		NR208-308B-XXX/AL
2.250	3.312	2.000	0.188	0.188	.040		NR208-310A-XXX/AL
2.250	3.750	2.375	0.125	0.250	.040	OLT	NR208-324A-XX/AL
2.250	3.750	1.750	0.250	0.250	.040		NR208-324A-XXX/BR
2.250	3.750	2.500	0.250	0.250	.040		NR208-324B-XXX/AL
2.250	3.750	2.250	0.219	0.219	.032		NR208-324C-XXX/AL
2.250	5.125	2.000	0.188	0.188	.050	ILT	NR208-504A-XXX/AL
2.265	3.265	1.125	0.188	0.188	.040		NR208.5-308.5A-XXX/AL
2.281	3.421	1.500	0.063	0.094	.032		NR209-313.5A-XXX/AL
2.281	4.937	2.250	0.250	0.250	.050		NR209-430A-XXX/AL
2.312	2.625	2.312	0.078	0.078	.063		NR210-220A-XXX/AL
2.312	4.000	6.234	0.110	0.110	.050		NR210.3-400A-XXX/AL
2.312	4.375	2.250	0.094	0.078	.040	OLT	NR210-412A-XXX/AL
2.320	4.000	4.750	0.093	0.093	.050		NR210.3-400A-XXX/AL
2.330	6.062	1.500	0.062	0.250	.063		NR210.5-602C-XXX/AL
2.375	2.750	2.500	0.188	0.188	.040		NR212-224A-XXX/AL
2.375	2.750	2.500	0.312	0.188	.040		NR212-224B-XXX/AL
2.375	3.250	2.125	0.250	0.125	.050		NR212-308A-XXX/AL

2.250 Inch to 2.500 Inch - Rectangular Boxes - CONTINUED

Width	Length	Height	BR	SR	Thickness	COVERS	NORPIN PART #
2.375	3.250	2.250	0.188	0.125	.050		NR212-308B-XXX/AL
2.375	5.875	2.000	0.188	0.188	.063	OLT	NR212-528A-XXX/AL
2.468	4.875	1.000	0.125	0.125	.040		NR215-428A-XXX/AL
2.468	5.000	4.500	0.125	0.125	.040		NR215-500A-XXX/AL
2.475	4.875	.900 PINCH	0.093	0.093	.040		NR215-428S
2.480	7.765	.980 PINCH	0.125	0.125	.040		NR215.5-724SA-XXX/AL
2.484	3.031	4.875	0.062	0.250	.032		NR215.5-301A-XXX/AL
2.484	4.985	2.125	0.093	0.093	.032		NR215.5-431.5A-XXX/AL
2.484	9.750	980 PINCH	0.093	0.093	.040		NR215.5-924A-XXX/AL

2.500 to 2.750 Inch - Rectangular Boxes

Width	Length	Height	BR	SR	Thickness	COVERS	NORPIN PART #
2.500	3.000	2.500	0.250	0.250	.050		NR216-300A-XXX/AL
2.500	3.000	2.750	0.375	0.250	.050		NR216-300B-XXX/AL
2.500	3.500	2.500	0.250	0.250	.050		NR216-316A-XXX/AL
2.500	3.500	3.437	0.375	0.250	.050		NR216-316B-XXX/AL
2.500	3.500	2.500	0.125	0.250	.050		NR216-316C-XXX/AL
2.500	4.000	3.250	0.250	0.156	.050	OLT/ILT	NR216-400A-XXX/AL
2.500	4.000	3.250	0.375	0.156	.050		NR216-400B-XXX/AL
2.500	4.000	4.375	0.250	0.250	.050	OLT/ILT	NR216-400C-XXX/AL
2.500	4.000	2.375	0.125	0.250	.050		NR216-400D-XXX/AL
2.500	4.000	2.375	0.250	0.250	.050		NR216-400C-XXX/AL
2.500	4.281	2.000	0.188	0.188	.032	OLT	NR216-409A-XXX/AL
2.500	4.562	1.750	0.093	0.140	.040		NR216-418A-XXX/AL
2.500	4.562	2.593	0.125	0.140	.040		NR216-418B-XXX/AL
2.500	5.000	3.250	0.250	0.250	.063	ILT	NR216-500A-XXX/AL
2.500	5.000	3.250	0.375	0.250	.063		NR216-500B-XXX/AL
2.500	5.000	4.500	0.125	0.125	.040		NR216-500C-XXX/AL
2.500	6.000	3.250	0.250	0.250	.063	OLT	NR216-600A-XXX/AL
2.500	6.000	3.250	0.312	0.250	.063		NR216-600B-XXX/AL
2.500	6.000	2.250	0.250	0.270	.032		NR216-600C-XXX/AL
2.500	6.000	2.750	0.250	0.250	.032		NR216-600C-XXX/AL
2.500	6.500	1.500	0.125	0.188	.050		NR216-616A-XXX/AL
2.500	10.500	1.437	0.125	0.188	.063		NR216-1016A-XXX/AL
2.515	4.015	2.000	0.125	0.250	.050		NR216.5-400.5D-XXX/AL
2.531	4.718	2.625	0.125	0.125	.063	OLT	NR217-423A-XXX/AL
2.531	4.718	2.250	0.125	0.136	.050		NR217-423C-XXX/AL
2.562	2.937	0.656	0.125	0.156	.032		NR218-230A-XXX/BR
2.562	9.593	0.625	0.063	0.500	.063		NR218-919C-XXX/AL
2.625	3.531	2.500	0.250	0.210	.050		NR220-317A-XXX/AL
2.625	4.812	2.500	0.188	0.188	.050		NR220-426A-XXX/AL
2.640	2.765	0.375	0.032	0.188	.040		NR220.5-224.5C-XXX/AL
2.640	5.781	2.500	0.188	0.188	.032	ILT	NR220.5-525A-XXX/AL
2.687	4.375	2.790	0.094	0.265	.032		NR222-412A-XXX/AL

2.500 to 2.750 Inch - Rectangular Boxes - CONTINUED

Width	Length	Height	BR	SR	Thickness	COVERS	NORPIN PART #
2.687	4.687	1.781	0.110	0.110	.063		NR222-422A-XXX/AL
2.687	7.781	2.000			.032		NR222-723
2.687	8.000	2.500	0.125	0.125	.050		NR222-800A-XXX/AL
2.687	10.937	2.000	0.125	0.250	.063		NR222-1030A-XXX/AL
2.718	4.781	0.375	0.031	0.312	.032		NR223-425C-XXX/AL
2.734	6.609	0.500	0.032	0.344	.050		NR223.5-619.5C-XXX/AL

2.750 Inch to 3 Inch - Rectangular Boxes

Width	Length	Height	BR	SR	Thickness	COVERS	NORPIN PART #
2.750	3.000	2.750	0.250	0.188	.050		NR224-300A-XXX/AL
2.750	3.000	2.750	0.375	0.188	.050		NR224-300B-XXX/AL
2.750	3.250	2.250	0.093	0.188	.050		NR224-308A-XXX/AL
2.750	3.687	2.250	0.188	0.188	.040		NR224-322A-XXX/AL
2.750	4.000	1.500	0.188	0.156	.050		NR224-400A-XXX/AL
2.750	4.500	1.500	0.188	0.156	.050	OLG	NR224-416A-XXX/AL
2.765	5.015	2.250	0.188	0.188	.032		NR224.5-500.5A-XXX/AL
2.843	6.296	2.000	0.188	0.156	.032		NR227-609.5
2.844	6.234	1.340	0.188	0.150	.032	ILT	NR227-607.5A-XXX/AL
2.906	6.687	2.875	0.156	0.156	.032		NR229-622A-XXX/AL
2.920	5.212	0.500	0.093	0.218	.032		NR229.5-506.8
2.980	5.272	1.750	0.125	0.250	.032		NR231.4-508.7

3.000 Inch to 3.000 Inch - Rectangular Boxes

Width	Length	Height	BR	SR	Thickness	COVERS	NORPIN PART #
3.000	3.500	3.125	0.250	0.250	.063	OLT/ILT	NR300-316A-XXX/AL
3.000	3.500	3.250	0.375	0.250	.063		NR300-316B-XXX/AL
3.000	3.500	3.000	0.125	0.261	.050		NR300-316D-XXX/AL
3.000	3.750	1.000	0.156	0.203	.040		NR300-324A-XXX/AL
3.000	4.000	3.250	0.250	0.250	.063	OLT/ILT	NR300-400A-XXX/AL
3.000	4.000	3.250	0.375	0.250	.063		NR300-400B-XXX/AL
3.000	4.000	3.000	0.125	0.125	.063	OLT	NR300-400C-XXX/AL
3.000	4.000	1.000	0.250	0.287	.020		NR300-400D-XXX/AL
3.000	4.000	2.500	0.125	0.136	.050		NR300-400E-XXX/AL
3.000	4.000	1.500	0.125	0.250	.050		NR300-400 SP MIA
3.000	4.250	3.000	0.312	0.312	.063		NR300-408A-XXX/AL
3.000	4.250	2.500	0.188	0.140	.063		NR300-408C-XXX/AL
3.000	4.250	2.500	0.125	0.140	.063		NR300-408D-XXX/AL
3.000	4.500	3.000	0.188	0.188	.063	OLT/ILT	NR300-416A-XXX/AL
3.000	4.500	3.000	0.312	0.188	.063		NR300-416B-XXX/AL
3.000	4.750	3.000	0.188	0.290	.050		NR300-424A-XXX/AL
3.000	4.750	0.500	0.060	0.290	.050		NR300-424C-XXX/AL
3.000	4.750	3.000	0.156	0.156	.050		NR300-424D-XXX/AL
3.000	5.000	3.500	0.250	0.250	.063	ILT/OLL	NR300-500A-XXX/AL
3.000	5.000	3.500	0.375	0.250	.063		NR300-500B-XXX/AL
3.000	5.000	3.000	0.188	0.250	.063		NR300-500C-XXX/AL

3 Inch to 3.250 Inch - Rectangular Boxes - CONTINUED

Width	Length	Height	BR	SR	Thickness	COVERS	NORPIN PART #
3.000	5.000	3.000	0.188	0.250	.050		NR300-500D-XXX/AL
3.000	5.250	1.750	0.172	0.172	.040		NR300-508C-XXX/AL
3.000	6.000	3.125	0.250	0.250	.063	OLT/ILT	NR300-600A-XXX/AL
3.000	6.000	3.125	0.375	0.250	.063		NR300-600B-XXX/AL
3.000	6.000	2.250	0.375	0.375	.125		NR300-600D-XXX/AL
3.000	6.500	3.000	0.188	0.188	.050		NR300-616A-XXX/AL
3.000	6.870	3.000	0.370	0.250	.080	OLL	NR300-627.8A-XXX/AL
3.000	7.000	3.000	0.188	0.188	.040	OLT	NR300-700A-XXX/AL
3.000	7.500	3.000	0.250	0.312	.063		NR300-716A-XXX/AL
3.000	7.500	3.000	0.312	0.312	.063		NR300-716B-XXX/AL
3.000	8.000	2.375	0.375	0.375	.125		NR300-800A-XXX/AL
3.000	14.750	2.500	0.188	0.188	.063		NR300-1424A
3.031	7.687	2.500	0.062	0.188	.040		NR301-722A-XXX/AL
3.046	3.968	3.000	0.312	0.156	.040		NR301.5-331A-XXX/CU
3.060	4.060	6.234	0.140	0.140	.040		NR302-402A-XXX/AL
3.062	4.062	6.125	0.140	0.140	.040		NR302-402A-XXX/AL
3.062	7.250	3.500	0.188	0.250	.050		NR302-708A-XXX/AL
3.062	7.250	3.875	0.250	0.250	.050		NR302-708B-XXX/AL
3.125	3.500	3.000	0.188	0.188	.050		NR304-316A-XXX/AL
3.125	4.000	3.500	0.090	0.090	.063		NR304-400A-XXX/AL
3.125	5.250	2.250	0.094	0.188	.020		NR304-508A-XXX/AL
3.125	6.875	3.000	0.312	0.312	.090		NR304-628A-XXX/AL
3.171	3.968	6.500	0.093	0.063	.050		NR305.5-331A
3.187	3.187	7.500	0.125	0.062	.032		NR306-306 ARINC
3.202	3.952	0.562	0.031	0.125	.063		NR306.5-330.5-XXX/AL

3.250 Inch to 3.500 Inch - Rectangular Boxes

Width	Length	Height	BR	SR	Thickness	COVERS	NORPIN PART #
3.250	4.250	3.000	0.188	0.188	.050	OLT	NR308-408A-XXX/AL
3.250	4.250	0.625	0.063	0.281	.050		NR308-408-XXX/BR
3.250	4.625	3.250	0.188	0.188	.050		NR308-420A-XXX/AL
3.250	5.250	3.250	0.250	0.250	.050	OLT	NR308-508A-XXX/AL
3.250	5.250	6.000	0.437	0.312	.050		NR308-508C-XXX/AL
3.250	10.500	4.625	0.218	0.250	.050		NR308-1016A-XXX/AL
3.297	5.500	1.000	0.093	0.250	.040		NR309.5-516C-XXX/AL
3.343	4.093	7.000	0.250	0.188	.063		NR311-403A-XXX/AL
3.375	4.625	3.625	0.156	0.281	.040		NR312-420A-XXX/AL
3.375	4.625	3.625	0.250	0.281	.040		NR312-420B-XXX/AL
3.375	5.000	2.500	0.188	0.330	.050		NR312-500A-XXX/AL
3.375	5.296	3.000	0.188	0.328	.090		NR312-509.5A-XXX/AL
3.375	6.125	3.000	0.250	0.188	.063		NR312-604A-XXX/AL
3.500	3.593	3.500	0.125	0.250	.050		NR316-319A-XXX/AL
3.500	4.000	3.500	0.250	0.250	.063	OLT	NR316-400A-XXX/AL
3.500	4.000	3.500	0.375	0.250	.063		NR316-400B-XXX/AL
3.500	4.187	2.750	0.125	0.250	.063		NR316-406A-XXX/AL

3.500 Inch to 3.750 Inch - Rectangular boxes

Width	Length	Height	BR	SR	Thickness	COVERS	NORPIN PART #
3.500	4.500	3.500	0.250	0.250	.063		NR316-416A-XXX/AL
3.500	4.500	3.500	0.375	0.250	.063		NR316-416B-XXX/AL
3.500	4.750	3.000	0.156	0.200	.050		NR316-424A-XXX/AL
3.500	5.000	3.500	0.250	0.250	.063		NR316-500A-XXX/AL
3.500	5.000	3.500	0.375	0.250	.063		NR316-500B-XXX/AL
3.500	5.250	3.750	0.250	0.250	.050	OLT/ILT	NR316-508A-XXX/AL
3.500	5.250	3.750	0.375	0.250	.050		NR316-508B-XXX/AL
3.500	5.500	3.250	0.250	0.250	.063		NR316-516A-XXX/AL
3.500	5.500	0.500	0.062	0.156	.063		NR316-516C-XXX/AL
3.500	5.500	1.250	0.093	0.188	.063		NR316-516D-XXX/AL
3.500	6.000	3.000	0.187	0.188	.050	OLT/ILT	NR316-600A-XXX/AL
3.500	6.000	3.500	0.312	0.188	.050		NR316-600B-XXX/AL
3.500	6.500	3.250	0.188	0.188	.050		NR316-616A-XXX/AL
3.500	6.500	3.250	0.312	0.188	.050		NR316-616B-XXX/AL
3.500	6.500	1.812	0.125	0.125	.063		NR316-616C-XXX/AL
3.500	7.750	3.500	0.250	0.250	.050	ILT	NR316-724A-XXX/AL
3.500	9.000	3.500	0.250	0.250	.063		NR316-900A-XXX/AL
3.562	4.937	4.500	0.250	0.375	.063		NR318-430A-XXX/AL
3.578	4.000	3.500	0.250	0.218	.040		NR318.5-400A-XXX/AL
3.593	11.000	3.250	0.188	0.188	.063		NR319-1100A-XXX/AL
3.593	11.000	3.250	0.312	0.188	.063		NR319-1100B-XXX/AL
3.625	4.250	6.125	0.187	0.344	.040		NR320-408A-XXX/AL
3.625	5.625	1.000	0.063	0.281	.063		NR320-520A-XXX/AL
3.625	8.750	3.562	0.312	0.312	.050		NR320-824A-XXX/AL
3.656	6.156	3.562	0.250	0.250	.063		NR321-605A-XXX/AL
3.687	5.750	3.000	0.125	0.188	.063		NR322-524A-XXX/AL
3.734	5.281	3.500	0.250	0.340	.063		NR323.5-509A-XXX/AL
3.734	5.281	0.625	0.062	0.250	.063		NR323.5-509B-XXX/AL

3.750 Inch to 4 Inch - Rectangular Boxes

Width	Length	Height	BR	SR	Thickness	COVERS	NORPIN PART #
3.750	4.500	3.750	0.250	0.250	.063		NR324-416A-XXX/AL
3.750	4.500	3.750	0.375	0.250	.063		NR324-416B-XXX/AL
3.750	4.750	3.250	0.250	0.250	.050		NR324-424A-XXX/AL
3.750	5.000	5.000	0.188	0.500	.063	OLL	NR324-500A-XXX/AL
3.750	5.000	5.000	0.312	0.500	.063		NR324-500B-XXX/AL
3.750	7.875	3.750	0.275	0.312	.063	ILT	NR324-728A-XXX/AL
3.812	10.156	1.812	0.250	0.250	.063		NR326-1005A-XXX/AL
3.843	4.593	2.375	0.250	0.250	.063		NR327-419A-XXX/AL
3.843	4.593	3.500	0.188	0.250	.063		NR327-419B-XXX/AL
3.859	4.984	3.500	0.188	0.188	.063		NR327.5-431.5A-XXX/AL
3.859	4.984	3.250	0.188	0.188	.050		NR327.5-431.5B-XXX/AL
3.875	5.875	3.000	0.188	0.188	.063		NR328-528A-XXX/AL
3.875	5.875	3.000	0.312	0.188	.063		NR328-528B-XXX/AL
3.906	5.031	3.500	0.188	0.188	.063		NR329-501A-XXX/AL

3.750 Inch to 4 Inch - Rectangular Boxes - CONTINUED

Width	Length	Height	BR	SR	Thickness	COVERS	NORPIN PART #
3.906	6.015	3.000	0.190	0.190	.063		NR329-600.5-XXX/AL
3.906	6.031	3.000	0.125	0.250	.063		NR329-601C-XXX/AL
3.953	6.000				.063		NR330.5-600A-XX/AL
3.968	4.968	3.750	0.188	0.188	.040		NR331-431A-XXX/AL

4 Inch to 4.250 Inch - Rectangular Boxes

Width	Length	Height	BR	SR	Thickness	COVERS	NORPIN PART #
4.000	4.250	4.250	0.250	0.250	.063		NR400-408A-XXX/AL
4.000	4.500	4.250	0.312	0.312	.063	ILT	NR400-416A-XXX/AL
4.000	4.750	4.000	0.250	0.250	.063		NR400-424A-XXX/AL
4.000	5.000	4.000	0.250	0.250	.063	OLT	NR400-500A-XXX/AL
4.000	5.000	3.500	0.375	0.250	.063		NR400-500B-XXX/AL
4.000	5.000	3.500	0.188	0.188	.050		NR400-500C-XXX/AL
4.000	5.000	5.750	0.312	0.312	.063		NR400-500D-XXX/AL
4.000	5.000	3.000	0.093	0.125	.040	ILT	NR400-500E-XXX/AL
4.000	5.250	4.000	0.375	0.250	.050		NR400-508B-XXX/AL
4.000	5.250	4.000	0.250	0.250	.050	OLT/OLG	NR400-508A-XXX/AL
4.000	5.375	6.000	0.437	0.437	.050		NR400-512A-XXX/CU
4.000	6.000	3.750	0.250	0.250	.063	DLT/ILT/OLI	NR400-600A-XXX/AL
4.000	6.000	3.750	0.375	0.250	.063		NR400-600B-XXX/AL
4.000	6.000	3.750	0.250	0.266	.040		NR400-600C-XXX/AL
4.000	6.000	2.312	0.125	0.190	.063		NR400-600D-XXX/AL
4.000	6.000	2.312	0.125	0.125	.032		NR400-600E-XXX/AL
4.000	6.250	4.250	0.312	0.312	.063		NR400-608A-XXX/AL
4.000	6.500	4.250	0.312	0.312	.063	OLT/ILT	NR400-616A-XXX/AL
4.000	6.500	4.250	0.437	0.312	.063		NR400-616B-XXX/AL
4.000	6.500	2.500	0.250	0.250	.125		NR400-616D-XXX/AL
4.000	6.500	4.000	0.125	0.323	.050		NR400-616E-XXX/AL
4.000	7.000	4.625	0.312	0.312	.063	OLL	NR400-700A-XXX/AL
4.000	7.000	3.750	0.437	0.312	.063	OLL	NR400-700B-XXX/AL
4.000	7.000	4.625	0.375	0.750	.063		NR400-700C-XXX/AL
4.000	7.000	0.406	0.031	0.520	.040		NR400-700E-XXX/AL
4.000	8.000	4.000	0.312	0.312	.063	OLT	NR400-800A-XXX/AL
4.000	8.000	4.000	0.437	0.312	.063		NR400-800B-XXX/AL
4.000	8.750	3.750	0.187	0.250	.063		NR400-824A-XXX/AL
4.000	8.750	4.000	0.312	0.250	.063		NR400-824B-XXX/AL
4.000	9.000	4.500	0.250	0.250	.063	OLT	NR400-900A-XXX/AL
4.000	9.000	4.500	0.375	0.250	.063		NR400-900B-XXX/AL
4.062	4.796	6.500	0.250	0.093	.050		NR402-425.5S ARINC
4.090	4.828	6.500	0.250	0.093	.063		NR403-426.5 ARINC
4.125	6.750	3.750	0.188	0.188	.063		NR404-624A-XXX/AL
4.156	4.593	5.375	0.188	0.375	.040		NR405-419A-XXX/AL
4.187	7.187	4.000	0.312	0.343	.063		NR406-706A-XXX/AL
4.190	5.800	3.000	0.250	0.312	.090		NR406.1-525.6A-XXX/AL

4.250 Inch to 4.750 Inch - Rectangular Boxes

Width	Length	Height	BR	SR	Thickness	COVERS	NORPIN PART #
4.250	5.687	5.250	0.312	0.625	.050	OLL	NR408-522A-XXX/AL
4.250	6.000	1.875	0.125	0.188	.063		NR408-600A-XXX/AL
4.281	8.031	4.500	0.500	0.343	.050	OLT	NR409-801A-XXX/AL
4.312	5.062	5.750	0.250	0.375	.063		NR410-502A-XXX/AL
4.312	7.000	4.000	0.156	0.281	.050	OLT	NR410-700A-XXX/AL
4.312	7.000	3.625	0.250	0.250	.090		NR410-700C-XXX/AL
4.356	6.040	4.875	0.687	0.687	.063		NR411.4-601.3A-XXX/AL
4.375	5.000	4.250	0.188	0.250	.040	OLT	NR412-500A-XXX/AL
4.375	5.500	4.500	0.250	0.250	.050	OLT	NR412-516A-XXX/AL
4.375	5.500	4.500	0.375	0.250	.050		NR412-516B-XXX/AL
4.375	5.875	4.625	0.250	0.250	.063		NR412-528A-XXX/AL
4.375	6.062	4.000	0.687	0.687	.063		NR412-602A-XXX/AL
4.375	6.375	6.000	0.250	0.250	.063	OLT	NR412-612A-XXX/AL
4.400	5.375	8.200	0.312	0.312	.063		NR412.8-512A-XXX/AL
4.437	5.347	3.750	0.188	0.375	.040		NR414-514A-XXX/AL
4.437	8.500	4.250	0.250	0.312	.063		NR414-816A-XXX/AL
4.484	7.984	3.625	0.188	0.188	.050	OLG	NR415.5-731.5A-XXX/AL
4.500	5.000	4.500	0.312	0.312	.063		NR416-500A-XXX/AL
4.500	5.000	4.500	0.437	0.312	.063		NR416-500B-XXX/AL
4.500	6.000	4.500	0.250	0.250	.063	OLT/ILT	NR416-600A-XXX/AL
4.500	6.000	4.500	0.375	0.250	.063		NR416-600B-XXX/AL
4.500	6.000	3.000	0.125	0.156	.063		NR416-600C-XXX/AL
4.500	7.375	4.000	0.188	0.187	.063		NR416-712A-XXX/AL
4.500	7.500	2.125	0.156	0.218	.063	OLT	NR416-716A-XXX/AL
4.500	7.750	4.750	0.250	0.250	.063		NR416-724A-XXX/AL
4.500	8.750	3.000	0.440	0.375	.048		NR416-824A-XXX/CRS
4.500	11.875	4.000	0.120	0.200	.063		NR416-1128A-XXX/AL
4.515	6.702	4.500	0.250	0.500	.063		NR416.5-622.5A-XXX/AL
4.550	8.550	4.250	0.250	0.250	.063		NR417.5-817.5-XXX/AL
4.625	6.827	4.625	0.250	0.500	.063		NR420-626.5A-XXX/AL
4.625	7.750	3.750	0.125	0.203	.050		NR420-724A-XXX/AL
4.625	7.750	3.750	0.250	0.203	.050		NR420-724B-XXX/AL
4.733	5.984	1.000	0.125	0.218	.032	ILT	NR423.5-531.5A-XXX/AL
4.737	5.984	3.000	0.156	0.188	.063		NR423.5-531.5C-XXX/AL

4.750 Inch to 5 Inch - Rectangular Boxes

Width	Length	Height	BR	SR	Thickness	COVERS	NORPIN PART #
4.750	5.000	3.500	0.156	0.156	.040		NR424-500A-XXX/AL
4.750	5.343	6.156	0.438	0.625	.040		NR424-511A-XXX/AL
4.750	6.000	4.937	0.250	0.250	.050		NR424-600A-XXX/AL
4.750	6.000	3.500	0.125	0.219	.040	ILT	NR424-600C-XXX/AL
4.750	6.000	4.937	0.250	0.188	.050	ILT	NR424-600D-XXX/AL
4.750	6.625	4.500	0.250	0.250	.063	OLT/ILT	NR424-620A-XXX/AL
4.750	6.625	4.750	0.375	0.250	.063		NR424-620B-XXX/AL
4.750	9.500	4.500	0.250	0.250	.063		NR424-916A-XXX/AL

4.750 Inch to 5 Inch - Rectangular Boxes - CONTINUED

Width	Length	Height	BR	SR	Thickness	COVERS	NORPIN PART #
4.750	10.750	4.500	0.375	0.375	.063	OLT	NR424-1024A-XXX/AL
4.750	10.750	4.500	0.188	0.375	.063	OLT	NR424-1024B-XXX/AL
4.781	5.343	6.156	0.438	0.625	.040		NR425-511A-XXX/AL
4.781	8.812	2.406	0.188	0.188	.050		NR425-826A-XXX/AL
4.875	6.500	4.500	0.312	0.188	.063	OLL	NR428-616A-XXX/AL

5 Inch to 5.500 Inch - Rectangular Boxes

Width	Length	Height	BR	SR	Thickness	COVERS	NORPIN PART #
5.000	5.500	5.000	0.312	0.312	.063		NR500-516A-XXX/AL
5.000	5.500	5.000	0.437	0.312	.063		NR500-516B-XXX/AL
5.000	6.000	5.000	0.312	0.312	.063	OLT	NR500-600A-XXX/AL
5.000	6.000	5.000	0.437	0.312	.063	OLT	NR500-600B-XXX/AL
5.000	7.000	5.250	0.312	0.312	.063	OLT/ILT	NR500-700A-XXX/AL
5.000	7.000	5.250	0.437	0.312	.063	OLT/ILT	NR500-700B-XXX/AL
5.000	7.375	2.000	0.250	0.250	.063		NR500-712A-XXX/AL
5.000	7.375	7.000	0.250	0.250	.063		NR500-712B-XXX/AL
5.000	7.500	3.500	0.125	0.125	.050	OLL	NR500-716C-XXX/AL
5.000	8.000	3.500	0.250	0.250	.063		NR500-800B-XXX/AL
5.000	8.000	4.500	0.250	0.270	.040		NR500-800C-XXX/AL
5.000	8.406	5.000	0.312	0.312	.063		NR500-813A-XXX/AL
5.000	9.000	4.750	0.250	0.375	.050		NR500-900A-XXX/AL
5.000	9.000	5.000	0.375	0.375	.050		NR500-900B-XXX/AL
5.062	6.812	2.125	0.031	0.468	.032		NR502-626C-XXX/AL
5.080	5.670		0.093	0.093	.020		NRS5025-521.5A
5.109	5.718	1.625	0.125	0.250	.020		NR503.5-523A-XXX/AL
5.156	5.531	5.000	0.250	0.250	.050		NR505-517A-XXX/AL
5.187	8.000	4.250	0.250	0.156	.050	OLT/ILT	NR506-800A-XXX/AL
5.187	8.000	4.250	0.312	0.156	.050	OLT/ILT	NR506-800B-XXX/AL
5.187	8.000	2.500*	0.250	0.151	.063		NR506-800C-XXX/AL
5.250	11.000	5.000	0.200	0.200	.050		NR508-1100A-XXX/AL
5.250	11.875	5.250	0.500	0.500	.063		NR508-1128A-XXX/AL
5.281	9.312	0.437	0.090	0.437	.063		NR509-910C-XXX/AL
5.343	6.468	4.750	0.312	0.312	.063		NR511-615A-XXX/AL
5.375	8.200	6.000			.063		NR512-806.5A-XXX/AL
5.390	9.730	4.500	0.250	0.250	.063		NR512-923A-XXX/AL
5.566	9.906	4.500	0.250	0.250	.063		NR514-925A-XXX/AL
5.375	17.421	3.250	0.380	0.380	.063		NR512-1713.5A-XXX/AL
5.483	6.233	4.250	0.187	0.188	.050		NR515.5-607.5A-XXX/AL

5.500 Inch to 6 Inch - Rectangular Boxes

Width	Length	Height	BR	SR	Thickness	COVERS	NORPIN PART #
5.500	7.000	5.500	0.250	0.250	.063		NR516-700A-XXX/AL
5.500	8.000	5.000	0.250	0.250	.063	OLT	NR516-800A-XXX/AL
5.500	8.000	5.000	0.375	0.250	.063	OLT	NR516-800B-XXX/AL

5.500 Inch to 6 Inch - Rectangular Boxes - CONTINUED

Width	Length	Height	BR	SR	Thickness	COVERS	NORPIN PART #
5.500	9.625	4.750	0.375	0.375	.063		NR516-920A-XXX/AL
5.562	6.000	4.000	0.312	0.312	.063		NR518-600A-XXX/AL
5.562	8.906	5.500	0.144	0.144	.063		NR518-829A-XXX/AL
5.562	9.875	3.000	0.125	0.125	.063		NR518-928C-XXX/AL
5.625	7.625	5.000	0.312	0.312	.063		NR520-720A-XXX/AL
5.625	7.625	5.000	0.375	0.312	.063		NR520-720B-XXX/AL
5.703	6.078	5.500	0.250	0.750	.090		NR522.5-602.5A-XXX/AL
5.750	6.750	5.500	0.312	0.312	.063	OLT	NR524-624A-XXX/AL
5.750	6.750	5.500	0.188	0.312	.063	OLT	NR524-624B-XXX/AL
5.750	8.750	3.500	0.250	0.500	.063		NR524-824A-XXX/AL
5.827	6.125	0.375	0.093	0.125	.063		NR526.5-604C-XXX/AL
5.875	6.750	4.000	0.312	0.312	.063		NR528-624A-XXX/AL
5.875	7.000	5.000	0.188	0.188	.063		NR528-700A-XXX/AL

6 Inch to 7 Inch - Rectangular Boxes

Width	Length	Height	BR	SR	Thickness	COVERS	NORPIN PART #
6.000	7.000	5.500	0.312	0.312	.063	OLT/OLL	NR600-700A-XXX/AL
6.000	7.000	5.500	0.437	0.312	.063	OLT/OLL	NR600-700B-XXX/AL
6.000	7.500	5.000	0.312	0.312	.063		NR600-716A-XXX/AL
6.000	7.500	5.000	0.437	0.312	.063		NR600-716B-XXX/AL
6.000	8.000	6.125	0.375	0.312	.063	OLT/ILT	NR600-800A-XXX/AL
6.000	8.000	5.500	0.250	0.312	.063	OLT/ILT	NR600-800B-XXX/AL
6.000	9.000	6.000	0.312	0.312	.063	OLT/OLL	NR600-900A-XXX/AL
6.000	9.000	6.000	0.437	0.312	.063	OLT/OLL	NR600-900B-XXX/AL
6.000	9.000	6.000	0.288	0.288	.090	OLT	NR600-900C-XXX/AL
6.000	9.000	6.000	0.312	0.312	.090		NR600-900D-XXX/AL
6.000	12.000	6.000	0.500	0.500	.063		NR600-1200A-XXX/AL
6.000	12.000	3.000	0.125	0.500	.063		NR600-1200C-XXX/AL
6.000	13.500	5.750	0.500	0.500	.063		NR600-1316A-XXX/AL
6.250	6.500	6.000	0.125	0.250	.063		NR608-616A-XXX/AL
6.375	9.187	5.500	0.250	0.250	.063		NR612-906A-XXX/AL
6.375	9.187	5.500	0.375	0.250	.063		NR 612-906B-XXX/AL
6.375	10.000	5.000	0.312	0.312	.063		NR612-1000A-XXX/AL
6.500	8.500	5.000	0.187	0.250	.063		NR616-816A-XXX/AL
6.500	9.375	5.250	0.250	0.500	.063	OLT	NR616-912A-XXX/AL
6.750	6.781	2.500	0.187	0.250	.050		NR624-625A-XXX/AL
6.875	8.375	6.000	0.312	0.500	.063		NR628-812A-XXX/AL
6.875	8.375	6.000	0.375	0.500	.063		NR628-812B-XXX/AL
6.970	7.481	3.286	0.170	0.170	.050		NR631-715.4A-XXX/AL

7 Inch to 8 Inch - Rectangular Boxes

Width	Length	Height	BR	SR	Thickness	COVERS	NORPIN PART #
7.000	8.000	6.000	0.312	0.312	.063	OLT	NR700-800A-XXX/AL
7.000	8.000	6.000	0.437	0.312	.063	OLT	NR700-800B-XXX/AL
7.000	9.000	7.000	0.437	0.437	.063	OLT	NR700-900A-XXX/AL
7.000	9.000	7.000	0.250	0.437	.063	OLT	NR700-900B-XXX/AL
7.000	9.000	5.000	0.250	0.453	.040		NR700-900C-XXX/AL
7.000	11.000	6.500	0.250	0.312	.063		NR700-1100A-XXX/AL
7.000	11.000	6.500	0.500	0.312	.063		NR700-1100B-XXX/AL
7.000	12.500	4.000	0.188	0.188	.063		NR700-1216A-XXX/AL
7.062	10.562	9.000	0.750	0.750	.063		NR702-1018A-XXX/AL
7.125	9.625	5.000	0.312	0.500	.063		NR704-920A-XXX/AL
7.187	18.000	7.000	0.440	0.500	.090		NR706-1800A-XXX/AL
7.375	9.375	0.500	0.030	0.560	.063		NR712-912C-XXX/AL
7.437	9.437	3.500	0.125	0.625	.063		NR714-914A-XXX/AL
7.500	8.125	7.125	0.250	0.250	.050		NR716-804A-XXX/AL
7.500	8.125	7.500	0.250	0.239	.063		NR716-804B-XXX/AL
7.500	12.000	5.000	0.250	0.750	.090		NR716-1200A-XXX/AL
7.750	10.500	7.500	0.500	0.500	.063		NR724-1016A-XXX/AL

8 Inch to 9 Inch - Rectangular Boxes

Width	Length	Height	BR	SR	Thickness	COVERS	NORPIN PART #
8.000	9.000	5.500	0.250	0.250	.063	ILT	NR800-900A-XXX/AL
8.000	9.000	5.500	0.375	0.250	.063	ILT	NR800-900B-XXX/AL
8.000	10.000	7.500	0.437	0.437	.063		NR800-1000A-XXX/AL
8.000	11.000	7.500	0.875	0.875	.063		NR800-1100A-XXX/AL
8.000	11.000	5.750	0.500	1.000	.063		NR800-1100C-XXX/AL
8.000	14.000	7.250	0.875	0.875	.063		NR800-1400A-XXX/AL
8.375	11.500	6.000	0.500	0.560	.063		NR812-1116A-XXX/AL
8.500	12.000	9.000	1.000	1.000	.063		NR816-1200A-XXX/AL
8.500	14.000	7.500	0.250	0.250	.063		NR816-1400A-XXX/AL
8.750	12.000	8.000	0.500	0.750	.063		NR824-1200A-XXX/AL
8.750	13.750	4.250	0.500	0.750	.090		NR824-1324A-XXX/AL
8.875	10.781	5.500	0.125	0.500	.063		NR828-1025A-XXX/AL

9 Inch to 10 Inch - Rectangular Boxes

Width	Length	Height	BR	SR	Thickness	COVERS	NORPIN PART #
9.000	12.000	3.000	0.200	0.200	.050		NR900-1200A-XXX/AL
9.125	12.125	6.000	0.250	0.625	.063		NR904-1204A-XXX/AL
9.187	13.250	9.000	0.625	0.625	.063		NR906-1308A-XXX/AL
9.375	10.250	4.000	0.188	0.188	.050		NR912-1008A-XXX/AL
9.375	14.000	5.000	0.450	0.450	.050	OLT	NR912-1400A-XXX/AL

10 Inch to 11 Inch - Rectangular Boxes

Width	Length	Height	BR	SR	Thickness	COVERS	NORPIN PART #
10.000	12.000	8.000	1.000	1.000	.090		NR1000-1200A-XXX/AL
10.000	16.000	6.000	1.000	1.000	.090		NR1000-1600A-XXX/AL
10.000	18.062	6.000	1.000	1.000	.090		NR1000-1802A-XXX/AL
10.060	13.060	9.000	0.500	0.188	.063		NR1002-1302A-XXX/AL
10.187	12.187	2.500	0.187	0.500	.063		NR1006-1206A-XXX/AL
10.250	15.250	9.000	0.750	0.750	.063		NR1008-1508A-XXX/AL

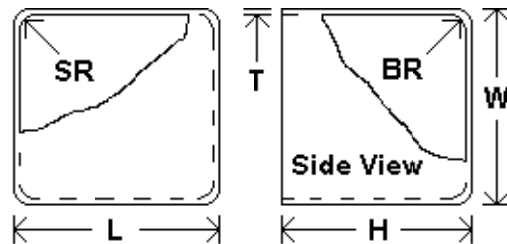
12 inch to 13 Inch - Rectangular Boxes

Width	Length	Height	BR	SR	Thickness	COVERS	NORPIN PART #
12.000	13.000	6.250	0.500	0.500	.090		NR1200-1300B-XXX/AL

13 Inch to 14 Inch - Rectangular Boxes

Width	Length	Height	BR	SR	Thickness	COVERS	NORPIN PART #
13.032	18.032	5.750	0.875	1.250	.063		NR1301-1801A-XXX/AL

SQUARE ENCLOSURES



OUTSIDE WIDTH	LENGTH	MAXIMUM HEIGHT	BOTTOM RADII	SIDE RADII	MATERIAL THICKNESS	COVERS	NORPIN PART #
INCHES - W	INCHES - L	INCHES - H	INCHES - BR	INCHES - SR	INCHES - T		

Less Than 1 Inch to 1 Inch - Square Boxes

Width	Length	Height	BR	SR	Thickness	COVERS	NORPIN PART #
0.937	0.937	0.500	0.109	0.109	.032		NS030-030A-XXX/AL
0.937	0.937	2.000	0.109	0.109	.032		NS030-030A-XXX/AL
0.937	0.937	2.000	0.125	0.109	.032		NS030-030B-XXX/AL

1 Inch to 2 Inch - Square Boxes

Width	Length	Height	BR	SR	Thickness	COVERS	NORPIN PART #
1.375	1.375	1.250	0.093	0.125	.032		NS112-112A-XXX/AL
1.375	1.375	1.250	0.156	0.125	.032		NS112-112B-XXX/AL
1.406	1.406	1.000	0.156	0.156	.016		NS113-113A-XXX/AL
1.500	1.500	1.500	0.188	0.188	.040		NS116-116A-XXX/AL
1.500	1.500	1.750	0.312	0.188	.040		NS116-116B-XXX/AL
1.500	1.500	1.812	0.250	0.250	.050		NS116-116C-XXX/AL
1.531	1.531	1.375	0.109	0.109	.032		NS117-117A-XXX/AL
1.750	1.750	2.000	0.188	0.188	.040	OLT/ILT	NS124-124A-XXX/AL
1.750	1.750	2.000	0.312	0.188	.040		NS124-124B-XXX/AL
1.875	1.875	2.000	0.156	0.156	.040		NS128-128A-XXX/AL
1.875	1.875	2.000	0.250	0.156	.040		NS128-128B-XXX/AL

2 Inch to 3 Inch - Square Boxes

Width	Length	Height	BR	SR	Thickness	COVERS	NORPIN PART #
2.000	2.000	2.250	0.188	0.188	.040	ILT	NS200-200A-XXX/AL
2.000	2.000	2.250	0.312	0.188	.040		NS200-200B-XXX/AL
2.000	2.000	2.000	0.188	0.196	.032		NS200-200C-XXX/AL
2.000	2.000	3.500	0.120	0.160	.040		NS200-200D-XXX/AL
2.000	2.000	2.500	0.125	0.188	.032		NS200-200E-XXX/AL
2.020	2.020	0.500	0.032	0.094	.032		NS200.7-200.7A-XXX/AL
2.250	2.250	2.500	0.250	0.250	.050	ILT	NS208-208A-XXX/AL
2.250	2.250	2.500	0.375	0.250	.050		NS208-208B-XXX/AL
2.343	2.343	3.250	0.090	0.375	.040		NS211-211A-XXX/AL
2.375	2.375	2.880	0.063	0.156	.032		NS212-212A-XXX/AL
2.375	2.375	0.500	0.030	0.280	.050		NS212-212C-XXX/AL
2.500	2.500	2.750	0.250	0.250	.050		NS216-216A-XXX/AL
2.500	2.500	2.750	0.375	0.250	.050		NS216-216B-XXX/AL
2.546	2.546	0.406	0.040	0.440	.040		NS217.5-217.5C-XXX/AL
2.750	2.750	2.875	0.250	0.250	.050		NS224-224A-XXX/AL
2.750	2.750	2.875	0.375	0.250	.050		NS224-224B-XXX/AL

3 Inch to 4 Inch - Square Boxes							
Width	Length	Height	BR	SR	Thickness	COVERS	NORPIN PART #
3.000	3.000	3.000	0.250	0.250	.050		NS300-300A-XXX/AL
3.000	3.000	3.000	0.375	0.250	.050		NS300-300B-XXX/AL
3.000	3.000	2.500	0.125	0.125	.040		NS300-300C-XXX/AL
3.000	3.000	5.187	0.250	0.250	.040		NS300-300E-XXX/AL
3.125	3.125	3.000	0.125	0.281	.032		NS304-304A-XXX/AL
3.125	3.125	3.250	0.210	0.668	.040		NS304-304C-XXX/AL
3.156	3.156	2.750	0.156	0.218	.050		NS305-305A-XXX/AL
3.250	3.250	3.250	0.250	0.250	.050	ILT	NS308-308A-XXX/AL
3.250	3.250	3.250	0.375	0.250	.050		NS308-308B-XXX/AL
3.250	3.250	3.000	0.312	0.188	.050		NS308-308C-XXX/AL
3.500	3.500	3.500	0.250	0.250	.063	OLT	NS316-316A-XXX/AL
3.500	3.500	3.500	0.375	0.250	.063		NS316-316B-XXX/AL
3.750	3.750	3.750	0.250	0.250	.063		NS324-324A-XXX/AL
3.750	3.750	3.750	0.375	0.250	.063		NS324-324B-XXX/AL
3.812	3.812	6.187	0.250	0.250	.063	OLT	NS326-326A-XXX/AL
3.875	3.875	3.750	0.250	0.257	.063		NS328-328A-XXX/AL
3.970	3.970	7.250	0.250	0.906	.050		NS331.5-331.5C-XXX/AL

4 Inch to 5 Inch - Square Boxes							
Width	Length	Height	BR	SR	Thickness	COVERS	NORPIN PART #
4.000	4.000	4.000	0.312	0.312	.063	ILT	NS400-400A-XXX/AL
4.000	4.000	4.000	0.437	0.312	.063		NS400-400B-XXX/AL
4.187	4.187	3.500	0.156	0.395	.063		NS406-406C-XXX/AL
4.250	4.250	4.250	0.312	0.312	.063	OLT	NS408-408A-XXX/AL
4.250	4.250	4.000	0.218	0.218	.040		NS408-408C-XXX/AL
4.250	4.250	3.000	0.188	0.209	.050	OLT/OLL	NS408-408E-XXX/AL
4.421	4.421	1.000	0.060	0.420	.063		NS413.5-413.5C-XXX/AL
4.500	4.500	4.500	0.312	0.312	.063	OLT	NS416-416A-XXX/AL
4.500	4.500	4.750	0.438	0.312	.063		NS416-416B-XXX/AL
4.577	4.577	4.500	0.375	1.080	.063		NS418.5-418.5C-XXX/AL
4.750	4.750	3.750	0.160	0.125	.063		NS424-424A-XXX/AL

5 Inch to 6 Inch - Square Boxes							
Width	Length	Height	BR	SR	Thickness	COVERS	NORPIN PART #
5.000	5.000	5.000	0.312	0.312	.063	OLT	NS500-500A-XXX/AL
5.000	5.000	5.000	0.437	0.312	.063		NS500-500B-XXX/AL
5.000	5.000	3.500	0.125	0.125	.040		NS500-500C-XXX/AL
5.156	5.156	1.500	0.094	0.125	.063		NS505-505A-XXX/AL
5.250	5.250	4.000	0.188	0.187	.063		NS508-508A-XXX/AL
5.448	5.448	5.448	0.063	0.187	.040		NS514.5-514.5-XXX/AL
5.468	5.468	1.250	0.053	0.156	.040		NS515-515A-XXX/AL
5.500	5.500	5.750	0.312	0.312	.063	OLT	NS516-516A-XXX/AL
5.500	5.500	5.500	0.437	0.312	.063		NS516-516B-XXX/AL
5.500	5.500	2.500	0.125	0.203	.050		NS516-516C-XXX/AL
5.500	5.500	11.500	0.312	0.375	.063	OLT	NS516-516E-XXX/AL

6 Inch to 7 Inch - Square Boxes

Width	Length	Height	BR	SR	Thickness	COVERS	NORPIN PART #
6.000	6.000	5.500	0.312	0.312	.063		NS600-600A-XXX/AL
6.000	6.000	5.500	0.437	0.312	.063		NS600-600B-XXX/AL
6.500	6.500	6.000	0.312	0.312	.063		NS616-616A-XXX/AL
6.500	6.500	6.000	0.437	0.312	.063		NS616-616B-XXX/AL

7 Inch to 8 Inch - Square Boxes

Width	Length	Height	BR	SR	Thickness	COVERS	NORPIN PART #
7.000	7.000	7.000	0.312	0.312	.063		NS700-700A-XXX/AL
7.000	7.000	6.000	0.437	0.312	.063		NS700-700B-XXX/AL
7.500	7.500	6.000	0.437	0.437	.063		NS716-716A-XXX/AL

8 Inch to 9 Inch - Square Boxes

Width	Length	Height	BR	SR	Thickness	COVERS	NORPIN PART #
8.000	8.000	7.000	0.625	0.625	.063	ILT	NS800-800A-XXX/AL
8.000	8.000	6.000	0.250	0.625	.063		NS800-800B-XXX/AL
8.156	8.156	7.000	0.250	0.250	.063		NS805-805A-XXX/AL
8.250	8.250	6.000	0.188	0.250	.050		NS808-808A-XXX/AL
8.500	8.500	6.000	0.625	0.625	.063		NS816-816A-XXX/AL
8.500	8.500	6.000	0.875	0.625	.063		NS816-816B-XXX/AL
8.500	8.500	3.000	0.125	0.188	.050		NS816-816D-XXX/AL

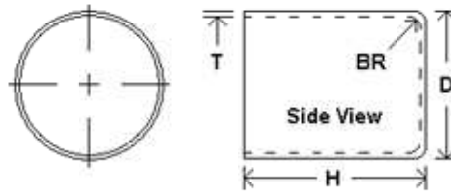
9 Inch to 10 Inch - Square Boxes

Width	Length	Height	BR	SR	Thickness	COVERS	NORPIN PART #
9.000	9.000	8.500	0.500	0.500	.063	ILT	NS900-900A-XXX/AL
9.000	9.000	8.500	0.750	0.500	.063		NS900-900B-XXX/AL

11 Inch to 12 Inch - Square Boxes

Width	Length	Height	BR	SR	Thickness	COVERS	NORPIN PART #
11.000	11.000	6.000	0.625	0.625	.090		NS1100-1100A-XXX/AL

ROUND ENCLOSURES



OUTSIDE DIAMETER INCHES - W	MAXIMUM HEIGHT INCHES - H	CORNER RADII INCHES - BR	MATERIAL THICKNESS INCHES - T	NORPIN PART #
--------------------------------	------------------------------	-----------------------------	----------------------------------	---------------

Less than 1 Inch to 1 Inch - Round Cans				
Width	Height	BR	Thickness	NORPIN PART #
0.875	1.250	0.015	0.020	NC028A-XXX/AL
0.875	1.250	0.125	0.020	NC028B-XXX/AL

1 Inch to 2 Inch - Round Cans				
Width	Height	BR	Thickness	NORPIN PART #
1.125	0.875	0.062	0.020	NC104A-XXX/AL
1.125	0.875	0.125	0.020	NC104B-XXX/AL
1.250	1.750	0.125	0.032	NC108A-XXX/AL
1.250	3.000	0.062	0.032	NC108C-XXX/AL
1.266	2.750	0.062	0.032	NC108.5A-XXX/AL
1.281	2.750	0.062	0.032	NC109A-XXX/AL
1.312	1.312	0.093	0.032	NC110A-XXX/AL
1.500	1.250	0.125	0.032	NC116A-XXX/AL
1.500	1.375	0.250	0.032	NC116B-XXX/AL
1.625	1.375	0.093	0.032	NC120A-XXX/AL
1.625	3.250	0.125	0.040	NC120C-XXX/AL
1.750	2.000	0.125	0.032	NC124A-XXX/AL
1.750	2.000	0.250	0.032	NC124B-XXX/AL
1.766	1.500	0.060	0.032	NC124.5A-XXX/AL
1.875	1.750	0.125	0.050	NC128A-XXX/AL
1.875	1.000	0.032	0.040	NC128A-XXX/BR
1.875	0.562	0.032	0.032	NC128B-XXX/BR
1.875	0.437	0.032	0.040	NC128C-XXX/AL
1.875	1.000	0.093	0.032	NC128C-XXX/BR
1.953	2.000	0.188	0.050	NC130.5A-XXX/AL
1.906	1.000	0.032	0.032	NC129A-XXX/BR
1.906	0.281	0.032	0.032	NC129C-XXX/AL
1.906	1.750	0.188	0.050	NC129D-XXX/AL
1.968	1.968	0.156	0.032	NC131A-XXX/AL

2 Inch to 3 Inch - Round Cans				
Width	Height	BR	Thickness	NORPIN PART #
2.000	1.875	0.078	0.032	NC 200D-XXX/AL
2.000	3.500	0.125	0.032	NC200A-XXX/AL
2.000	2.032	0.094	0.032	NC200A-XXX/BR
2.000	1.875	0.250	0.032	NC200B-XXX/AL
2.000	4.250	0.125	0.032	NC200C-XXX/AL
2.000	2.000	0.188	0.040	NC200F-XXX/AL
2.000	2.000	0.094	0.032	NC200G-XXX/AL
2.000	2.000	0.062	0.050	NC200H-XX/AL
2.063	2.125	0.125	0.032	NC202A-XXX/AL
2.063	2.000	0.188	0.063	NC202C-XXX/AL
2.125	1.812	0.062	0.032	NC204A-XXX/AL
2.156	3.500	0.062	0.040	NC205A-XXX/AL
2.156	2.000	0.125	0.032	NC205B-XXX/AL
2.203	2.312	0.218	0.050	NC206.5A-XXX/AL
2.218	6.000	0.125	0.032	NC207A-XXX/AL
2.218	1.750	0.062	0.032	NC207B-XXX/AL
2.250	2.250	0.125	0.050	NC208A-XXX/AL
2.250	1.875	0.125	0.032	NC208A-XXX/BR
2.250	2.250	0.250	0.050	NC208B-XXX/AL
2.250	3.500	0.093	0.040	NC208C-XXX/AL
2.250	1.750	0.093	0.032	NC208D-XXX/AL
2.281	1.562	0.094	0.050	NC209A-XXX/AL
2.297	2.320	0.125	0.040	NC209.5A-XXX/AL
2.297	2.250	0.188	0.040	NC209.5B-XXX/AL
2.328	2.328	0.062	0.032	NC210.5A-XXX/AL
2.375	2.000	0.188	0.050	NC212A-XXX/AL
2.375	2.000	0.312	0.050	NC212B-XXX/AL
2.375	5.750	0.062	0.050	NC212C-XXX/AL
2.375	1.750	0.125	0.020	NC212D-XXX/AL
2.375	1.125	0.047	0.032	NC212E-XXX/AL
2.437	1.000	0.062	0.032	NC214A-XXX/AL
2.437	1.000	0.062	0.063	NC214C-XXX/AL
2.437	5.750	0.062	0.032	NC214D-XXX/AL
2.500	2.500	0.188	0.050	NC216A-XXX/AL
2.500	2.375	0.312	0.050	NC216B-XXX/AL
2.500	4.000	0.125	0.063	NC216C-XXX/AL
2.500	2.750	0.188	0.032	NC216D-XXX/AL
2.500	2.500	0.188	0.063	NC216E-XXX/AL
2.531	4.750	0.125	0.040	NC217A-XXX/AL
2.568	2.250	0.125	0.063	NC218.2A-XXX/AL
2.578	0.500	0.093	0.040	NC218.5A-XXX/AL
2.687	2.375	0.125	0.050	NC222A-XXX/AL

2 Inch to 3 Inch - Round Cans - CONTINUED				
Width	Height	BR	Thickness	NORPIN PART #
2.750	2.750	0.188	0.050	NC224A-XXX/AL
2.750	2.750	0.312	0.050	NC224B-XXX/AL
2.750	2.250	0.156	0.020	NC224C-XXX/AL
2.750	2.750	0.188	0.040	NC224D-XXX/AL
2.812	3.500	0.093	0.032	NC226A-XXX/AL
2.812	2.000	0.093	0.032	NC226B-XXX/SS
2.937	2.500	0.188	0.032	NC230A-XXX/AL

3 Inch to 4 Inch - Round Cans				
Width	Height	BR	Thickness	NORPIN PART #
3.000	2.875	0.188	0.050	NC300A-XXX/AL
3.000	2.750	0.312	0.050	NC300B-XXX/AL
3.000	2.750	0.188	0.032	NC300C-XXX/AL
3.000	3.000	0.500	0.050	NC300D-XXX/AL
3.047	3.047	0.040	0.040	NC301.5A-XXX/AL
3.047	0.375	0.062	0.032	NC301.5A-XXX/CU
3.063	2.500	0.090	0.050	NC302A-XXX/AL
3.078	0.625	0.045	0.040	NC302.5A-XXX/AL
3.093	0.562	0.032	0.032	NC303A-XXX/AL
3.093	0.562	0.062	0.050	NC303C-XXX/AL
3.093	0.500	0.188	0.050	NC303D-XXX/AL
3.125	2.000	0.063	0.032	NC304A-XXX/AL
3.188	2.750	0.125	0.032	NC306A-XXX/AL
3.188	2.250	0.093	0.050	NC306C-XXX/AL
3.203	5.025	0.093	0.063	NC306.5A-XXX/AL
3.203	3.000	0.093	0.059	NC306.5A-XXX/CRS
3.250	5.250	0.250	0.050	NC308A-XXX/AL
3.250	3.250	0.375	0.050	NC308B-XXX/AL
3.359	2.500	0.063	0.048	NC311.5A-XXX/CRS
3.375	3.250	0.250	0.050	NC312A-XXX/AL
3.375	0.250	0.062	0.050	NC312C-XXX/AL
3.375	1.656	0.062	0.032	NC312D-XXX/AL
3.437	3.000	0.125	0.050	NC314A-XXX/AL
3.500	3.500	0.250	0.050	NC316A-XXX/AL
3.500	3.500	0.375	0.050	NC316B-XXX/AL
3.500	2.500	0.125	0.063	NC316C-XXX/AL
3.500	3.625	0.250	0.063	NC316D-XXX/AL
3.531	3.500	0.156	0.050	NC317A-XXX/AL
3.531	3.531	0.188	0.040	NC317B-XXX/AL
3.562	1.000	0.062	0.032	NC318A-XXX/AL
3.562	3.000	0.188	0.032	NC318B-XXX/AL
3.562		0.250	0.040	NC318C-XXX/AL

3 Inch to 4 Inch - Round Cans - CONTINUED				
Width	Height	BR	Thickness	NORPIN PART #
3.625	2.750	0.250	0.063	NC320A-XXX/AL
3.625	3.625	0.125	0.040	NC320C-XXX/AL
3.661	4.250	0.125	0.040	NC321A-XXX/AL
3.687	7.500	0.500	0.040	NC322A-XXX/AL
3.687	2.500	0.062	0.063	NC322C-XXX/AL
3.750	3.500	0.250	0.050	NC324A-XXX/AL
3.750	0.300	0.045	0.020	NC324A-XXX/BR
3.750	3.500	0.375	0.050	NC324B-XXX/AL
3.750	3.500	0.250	0.040	NC324C-XXX/AL
3.766	4.000	0.188	0.032	NC324.5A-XXX/AL
3.870	3.870	0.125	0.032	NC328A-XXX/AL
3.870	3.870	0.500	0.063	NC328B-XXX/AL
3.906	1.000	0.060	0.050	NC329B-XXX/AL

4 Inch to 5 Inch - Round Cans				
Width	Height	BR	Thickness	NORPIN PART #
4.000	4.000	0.312	0.050	NC400A-XXX/AL
4.000	4.500	0.437	0.050	NC400B-XXX/AL
4.000	2.000	0.062	0.040	NC400C-XXX/CRS
4.000	4.000	0.375	0.063	NC400D-XXX/AL
4.125	3.750	0.188	0.040	NC404A-XXX/AL
4.125	0.625	0.063	0.050	NC404C-XXX/AL
4.125	3.000	0.250	0.050	NC404D-XXX/AL
4.172	6.125	0.188	0.063	NC405.5A-XXX/AL
4.188	4.000	0.375	0.050	NC406A-XXX/AL
4.188	4.000	0.250	0.050	NC406B-XXX/AL
4.188	5.812	0.250	0.063	NC406C-XXX/AL
4.250	4.250	0.312	0.050	NC408A-XXX/AL
4.250	4.240	0.437	0.050	NC408B-XXX/AL
4.343	6.500	0.188	0.032	NC411A-XXX/AL
4.375	4.250	0.250	0.063	NC412A-XXX/AL
4.375	0.562	0.062	0.063	NC412C-XXX/AL
4.390	2.000	0.032	0.032	NC412.5A-XXX/AL
4.437	4.500	0.375	0.050	NC414A-XXX/AL
4.437	4.500	0.250	0.050	NC414B-XXX/AL
4.437	1.750	0.062	0.050	NC414C-XXX/AL
4.500	4.500	0.375	0.050	NC416A-XXX/AL
4.500	4.500	0.500	0.050	NC416B-XXX/AL
4.500	4.000	0.281	0.063	NC416C-XXX/AL
4.500	3.000	0.062	0.063	NC416D-XXX/AL
4.593	2.125	0.062	0.050	NC419A-XXX/AL
4.593	4.000	0.250	0.050	NC419B-XXX/AL

4 Inch to 5 Inch - Round Cans - CONTINUED				
Width	Height	BR	Thickness	NORPIN PART #
4.625	4.500	0.188	0.050	NC420A-XXX/AL
4.750	4.500	0.375	0.050	NC424A-XXX/AL
4.750	4.500	0.500	0.050	NC424B-XXX/AL
4.937	4.625	0.500	0.063	NC430A-XXX/AL
4.968	5.125	0.500	0.090	NC431A-XXX/AL

5 Inch to 6 Inch - Round Cans				
Width	Height	BR	Thickness	NORPIN PART #
5.000	4.875	0.375	0.063	NC500A-XXX/AL
5.000	4.875	0.500	0.063	NC500B-XXX/AL
5.000	4.500	0.219	0.063	NC500C-XXX/AL
5.000	4.000	0.218	0.050	NC500D-XXX/AL
5.016	7.000	0.219	0.063	NC500.5A-XXX/AL
5.016	5.000	0.219	0.050	NC500.5C-XXX/AL
5.047	7.000	0.375	0.090	NC501.5A-XXX/AL
5.125	5.000	0.375	0.063	NC504A-XXX/AL
5.125	5.000	0.125	0.063	NC504C-XXX/AL
5.140	2.875	0.125	0.090	NC504.5C-XXX/AL
5.250	4.500	0.250	0.063	NC508A-XXX/AL
5.250	4.500	0.375	0.063	NC508B-XXX/AL
5.250	3.500	0.188	0.040	NC508C-XXX/AL
5.296	3.327	0.500	0.063	NC509.5A-XXX/AL
5.500	5.500	0.375	0.063	NC516A-XXX/AL
5.500	5.500	0.500	0.063	NC516B-XXX/AL
5.500	4.000	0.218	0.090	NC516C-XXX/AL
5.500	4.500	0.188	0.050	NC516D-XXX/AL
5.750	5.000	0.375	0.063	NC524A-XXX/AL
5.750	5.000	0.500	0.063	NC524B-XXX/AL
5.843	3.000	0.250	0.050	NC527A-XXX/AL

6 Inch to 7 Inch - Round Cans				
Width	Height	BR	Thickness	NORPIN PART #
6.000	6.000	0.375	0.063	NC600A-XXX/AL
6.000	5.500	0.500	0.063	NC600B-XXX/AL
6.000	5.500	0.250	0.050	NC600D-XXX/AL
6.375	6.000	0.375	0.063	NC612A-XXX/AL
6.547	4.000		0.050	NC617.5A-XXX/AL
6.562	6.250	0.375	0.063	NC618A-XXX/AL
6.562	6.000	0.250	0.063	NC618C-XXX/AL
6.562	4.500	0.500	0.063	NC618B-XXX/AL
6.687	5.000	0.312	0.063	NC622A-XXX/AL
6.812	5.000	0.312	0.063	NC626A-XXX/AL

7 Inch to 8 Inch - Round Cans				
Width	Height	BR	Thickness	NORPIN PART #
7.562	8.500	0.312	0.063	NC718A-XXX/AL
7.562	7.000	0.500	0.050	NC718A-XXX/CU
7.906	7.500	0.375	0.063	NC729A-XXX/AL

8 Inch to 9 Inch - Round Cans				
Width	Height	BR	Thickness	NORPIN PART #
8.750	8.750	0.375	0.063	NC824A-XXX/AL

9 Inch to 10 Inch - Round Cans				
Width	Height	BR	Thickness	NORPIN PART #
9.125	8.500	0.375	0.090	NC904A-XXX/AL
9.125	8.000	0.343	0.090	NC904B-XXX/AL
9.125	1.000	0.063	0.090	NC904C-XXX/AL
9.750	10.000	0.250	0.063	NC924A-XXX/AL

11 Inch to 12 Inch - Round Cans				
Width	Height	BR	Thickness	NORPIN PART #
11.000	9.500	0.500	0.063	NC1100A-XXX/CU



NORPIN

MANUFACTURING CO., INC.

P.O. BOX 1031
2342 BOSTON ROAD
WILBRAHAM, MA 01095

PHONE: (413) 599-1627
PHONE: (800) 795-1302
FAX: (413) 599-1696